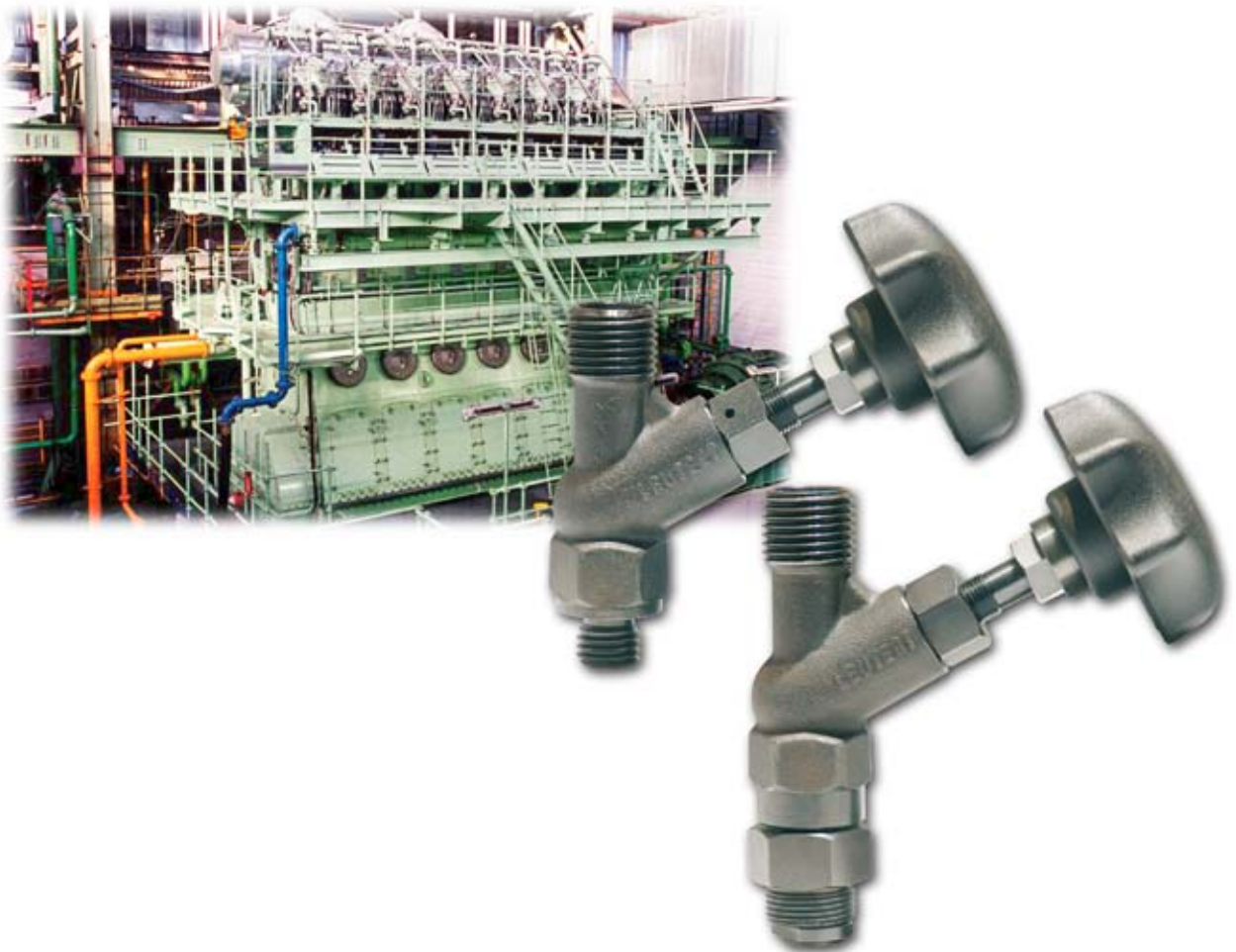


Indicator Valve



Engine components

for the connection of mechanical engine indicators and digital pressure indicators with diesel engines

Technical specifications

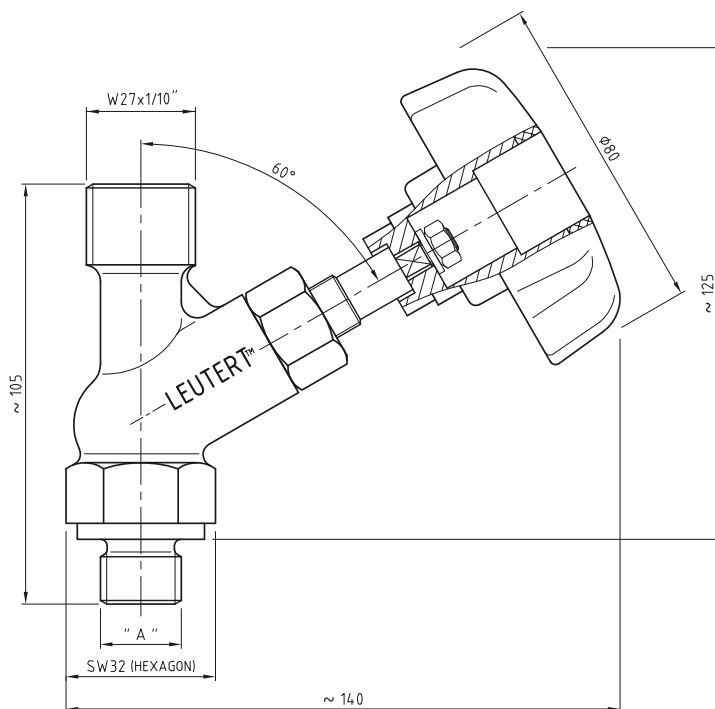
Max. working pressure :	300 bar
Max. working temp. :	600°C
Max. spindle stroke :	approx. 2.5 mm = 2 turns of handwheel
Weight :	approx. 0.6 kg

Design

- steel housing 1.7225 heat treated
- tensile strength over 1,000 N/mm²
- valve cone stainless steel
- handwheel design is user-friendly

The prestressed spring action of the axially movable valve cone ensures excellent sealing on hot and cold engines. On request the indicator valve can be supplied with a protective cap, corresponding to DIN 6273.

Dimensions

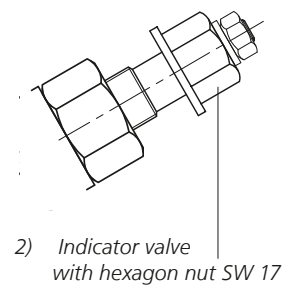


1) Indicator valve compl. with handwheel

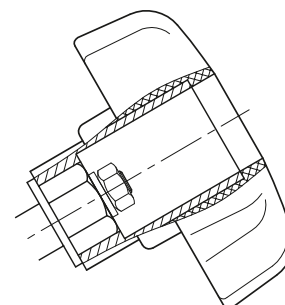
Connections

Connection - engine end (A)
 M 20
 M 20 x 1.5
 1/2" NPT
 R 1/2"
 R 3/4"
 3/4" WH
 other dimensions on request

Connection - indicator end
 suitable for all mechanical and digital engine indicators with standardized thread W 27 x 1/10".



2) Indicator valve with hexagon nut SW 17



3) Option: Handwheel, single for hexagon nut SW17