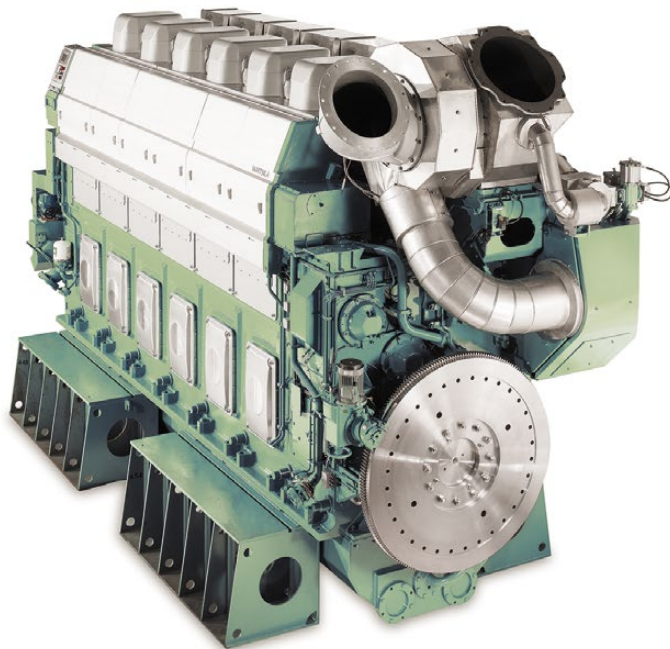


Peak Pressure Indicator MSI-4



Cylinder Pressure Monitoring

The MSI-4 peak pressure engine indicator is designed for displaying the maximum value of gas pressures which are subject to rapid variations. The device is particularly suitable to measure the peak pressure in Diesel engines.

Description

The Leutert Peak Pressure Engine Indicator MSI-4 measures and displays the maximum gas pressure of each cylinder in large Diesel engines. This pressure is subject to rapid change while the engine is running. The instrument is hallmarked by simple operation and a high degree of instrumental precision in all speed ranges and may be used to measure engines with a maximum combustion temperature of 350°C. Its sturdy design makes it immune to vibration, with extremely low maintenance requirements.

The MSI-4 consists of a sturdy grip section and a solid stainless steel bottom part with connecting nut and venting screw. A stainless steel pressure gauge, is mounted on top end of the bottom part.

The bottom part also houses a shock absorber and a shutoff system (valve assembly). The shock absorber regulates and stabilizes the buildup of pressure for the display unit. The shutoff system closes as soon as the peak pressure is reached and, thus, enables a correct pressure reading.

The connecting nut enables the MSI-4 unit to be mounted on any indicator valve or cock with a standard W27 x 1/10" thread.

The venting screw may be actuated to reset the device to its zero position after the measuring procedure has been completed.

Every single device is being tested and calibrated according to our ISO 9001 quality standards and will be supplied with a calibration certificate proving the accuracy of the device.

Features

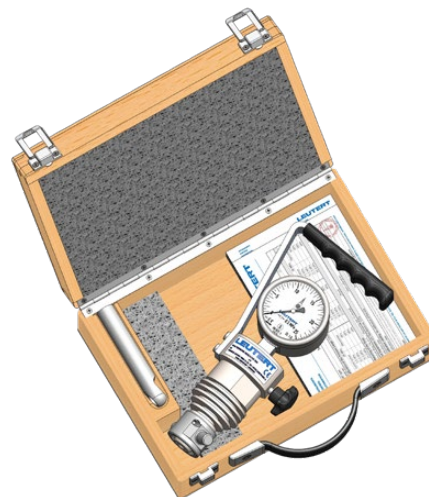
- Easy handling
- High accuracy in all speed ranges
- Extremely robust, low maintenance
- Insensitive to vibration
- Pressure gauge in safety construction
- Light-weight

Technical specifications

Measuring ranges	0 to 160 bar, 0 to 250 bar, 0 to 300 bar, 0 to 25 MPa
Engine range	up to 2,500 rpm
Permissible temperature	ambient -20 to 60°C
Error margin	± 1.6 %
Dimensions	225 mm x 108 mm x 57 mm
Weight	1.8 kg without wooden box 3.0 kg with wooden box
Standard connection	W 27 x 1/10"

Standard accessories

- 1 wooden box
- 1 hollow spanner - connecting nut
- 1 test protocol
- 1 operating instructions



MSI-4 complete in wooden box