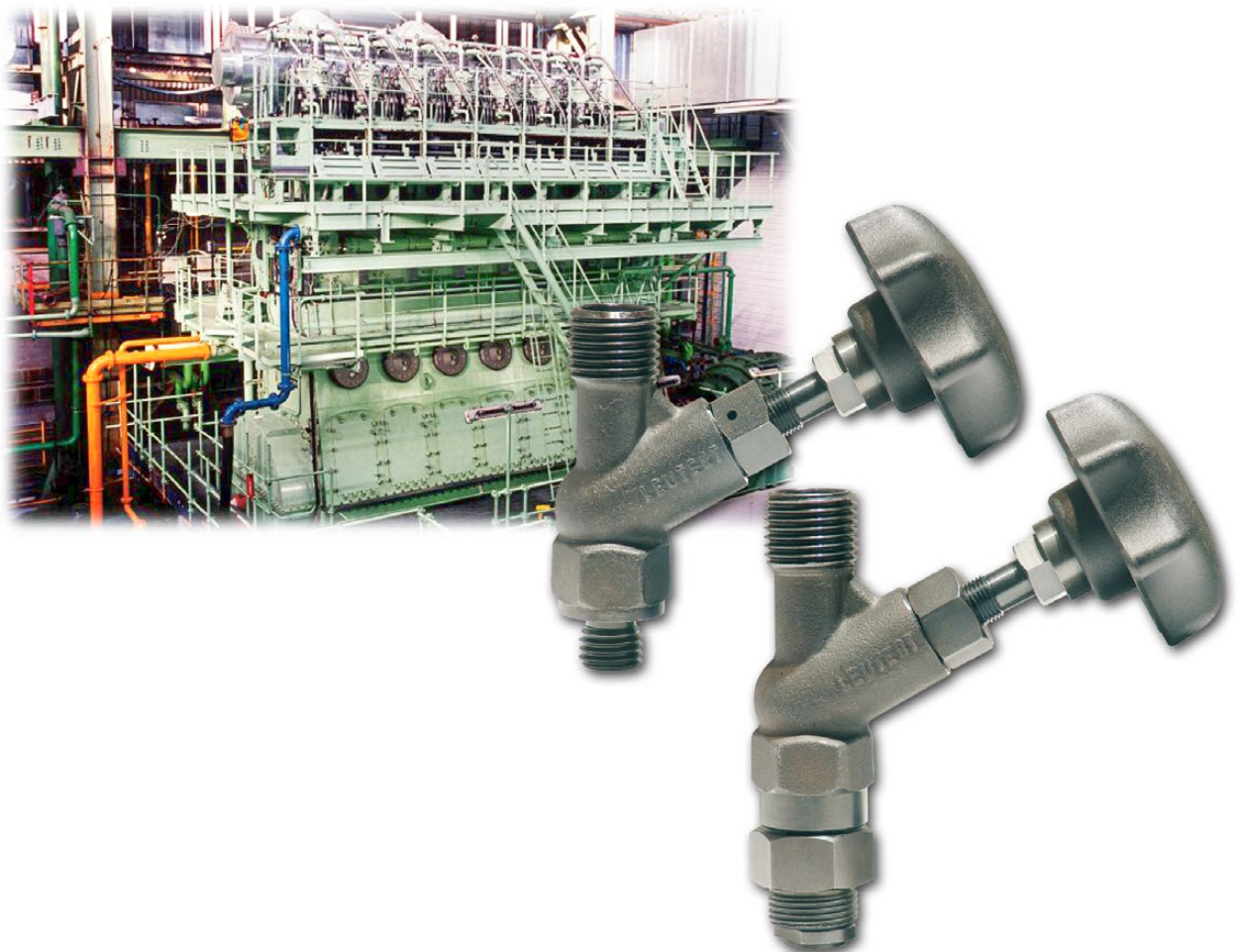


## Indicator Valve



### **Cylinder Pressure Monitoring**

Indicator valves are used for the connection of mechanical engine indicators and digital pressure indicators with Diesel engines.

## Technical specifications

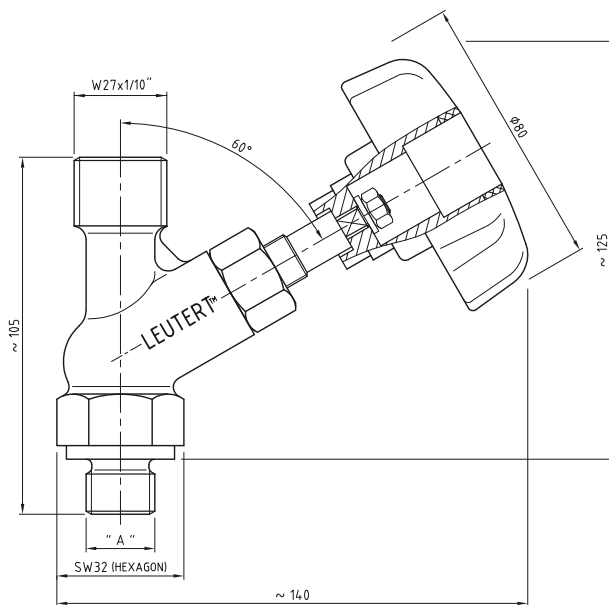
Max. working pressure :	300 bar
Max. working temp. :	600°C
Max. spindle stroke :	approx. 2.5 mm = 2 turns of handwheel
Weight :	approx. 0.6 kg

## Design

- steel housing 1.7225 heat treated
- tensile strength over 1,000 N/mm<sup>2</sup>
- valve cone stainless steel
- handwheel design is user-friendly

The prestressed spring action of the axially movable valve cone ensures excellent sealing on hot and cold engines. On request the indicator valve can be supplied with a protective cap, corresponding to DIN 6273.

## Dimensions



1) Indicator valve compl. with handwheel

## Connections

Connection - engine end (A)  
M 20  
M 20 x 1.5  
1/2" NPT  
R 1/2"  
R 3/4"  
3/4" WH  
other dimensions on request

Connection - indicator end  
suitable for all mechanical and digital engine indicators with standardized thread W 27 x 1/10".

